

November 15, 2016

Amtrak Hiawatha Service Proposal

Hiawatha Service Line

- Currently makes 7 round trips daily between Chicago and Milwaukee (6 on Sunday)
- IDOT, WisDOT and Amtrak propose an increase to 10 round trips daily
- Increased traffic will negatively impact freight operations
- An initial environmental assessment (available on WisDot's website) was released, which includes recommendations related to Northbrook's local rails

Design Enhancements to A-20

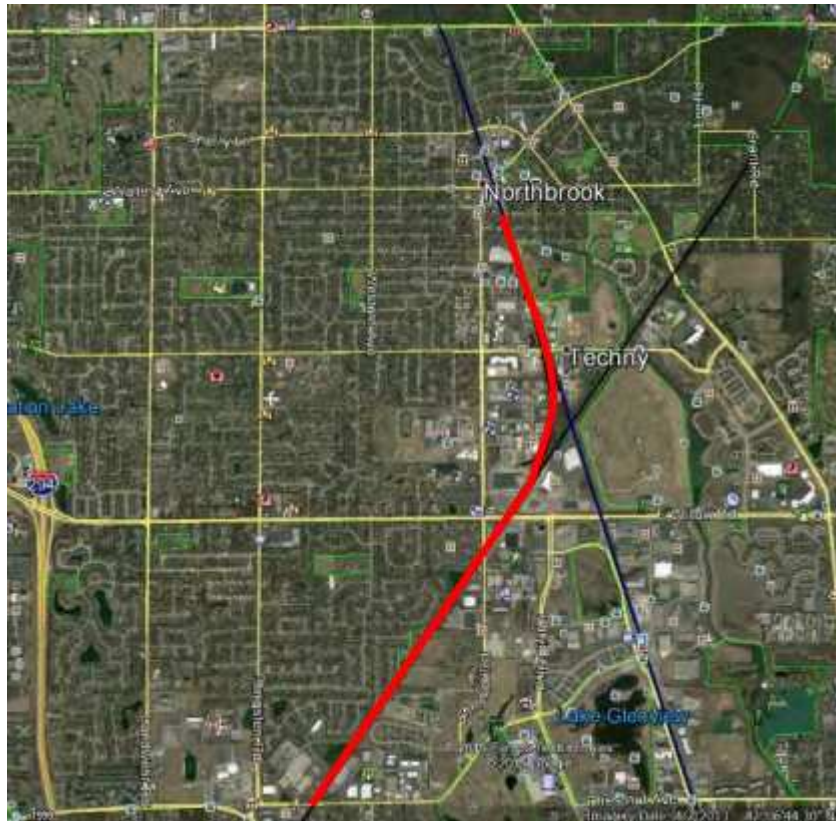
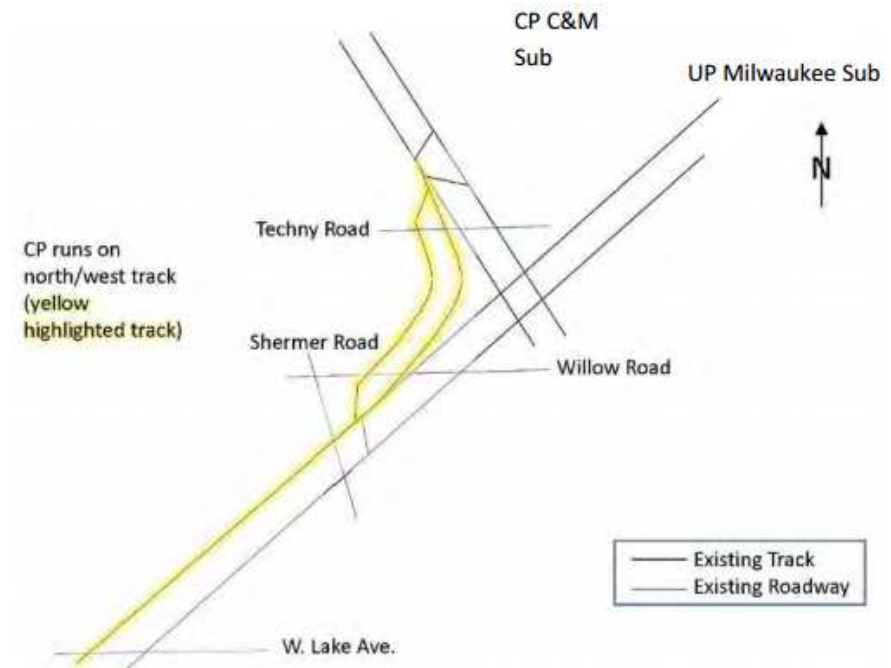
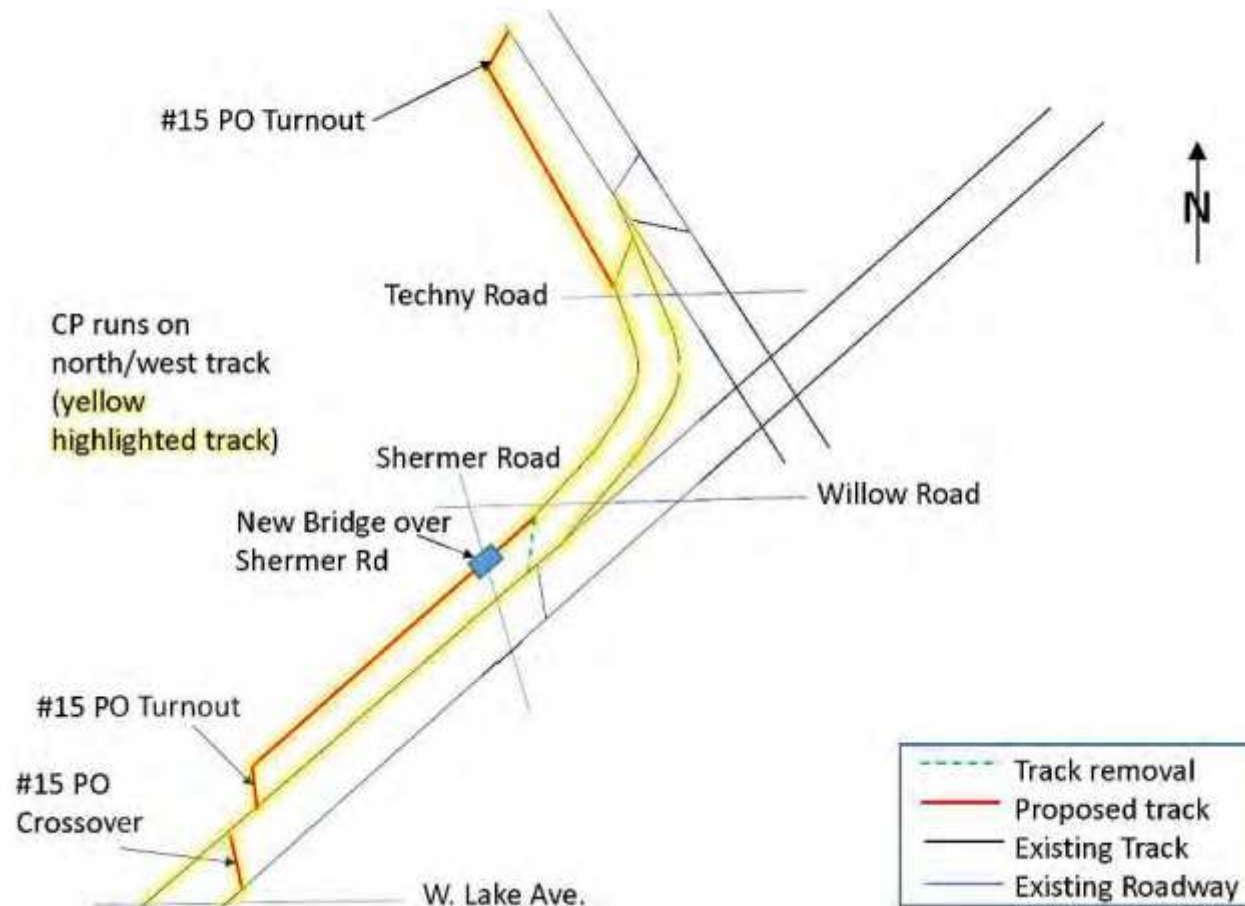


Figure A-12
Current Track Configuration at A-20



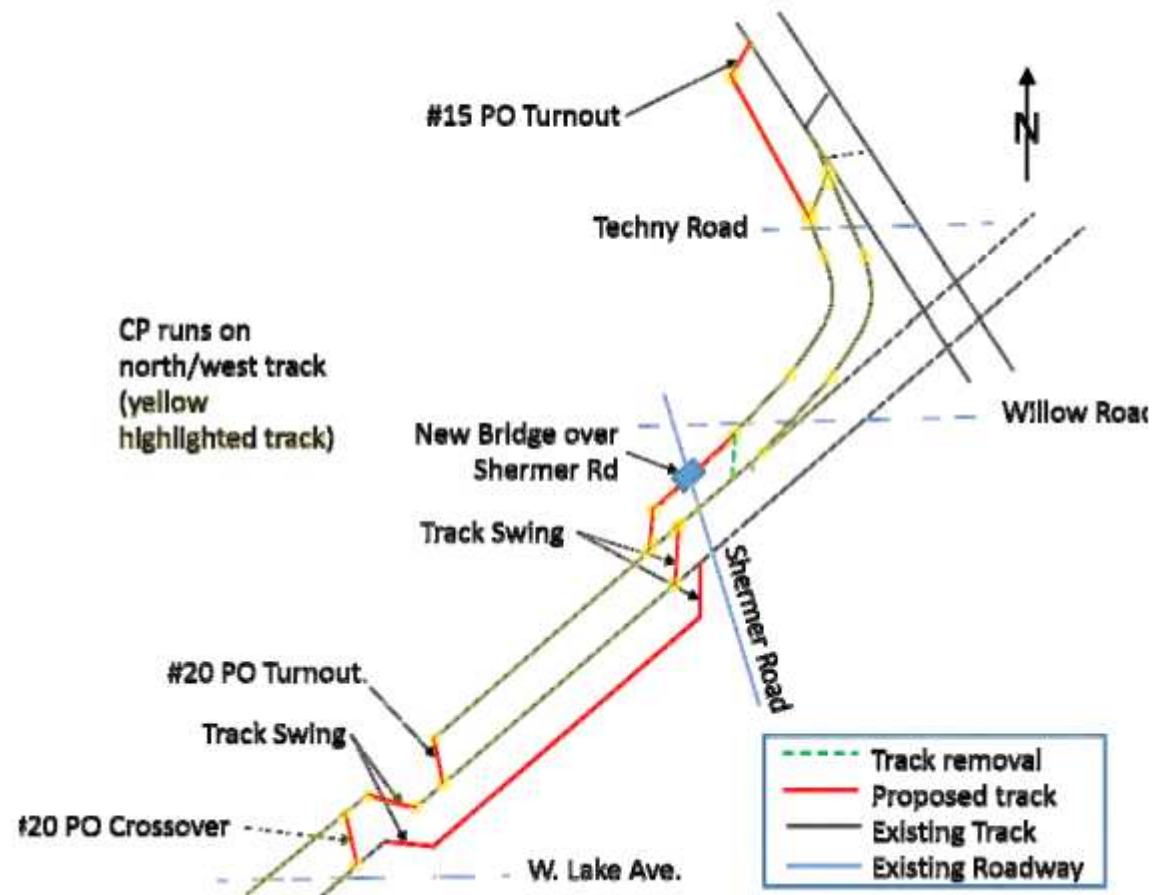
Design Alternative 1

Design Alternative 1 Proposed Track Configuration at A-20



Design Alternative 2

Design Alternative 2 Proposed Track Configuration at A-20



Potential Impacts to Northbrook

- As a Result of Increased Hiawatha Service:
 - Up to 6 additional crossings per day, impacting Dundee, Shermer and Techny Roads
- As a Result of A-20 Improvements:
 - Idling trains
 - Potential impacts on Techny Road
 - New railroad turnout north of Techny Road
 - Temporary lane closures on Techny and Shermer Roads during construction

Board Action

- President Frum and staff voiced concerns at a public hearing held in Glenview on November 2.
- A proposed resolution is on the consent agenda for tonight.
- Staff to continue working with neighboring municipalities and elected officials.