

Project 14 Shermer Road Outlet



Illinois Road at Shermer Road

Illinois Road
Sewer Surcharge



Check Valve

PROJECT 14 SHERMER ROAD OUTLET

Statement of Conditions:

More than one half mile of Shermer Road is served by a storm sewer system that was designed to carry runoff from a 10-year storm and was constructed in the mid 1990s. Nearby older, separate drainage systems cannot adequately convey storms of moderate to high intensities. The situation is further aggravated by increased runoff from property redevelopment (including Northbrook Park and Sunset Fields Subdivisions). Overflow from the older systems puts an additional demand on the Shermer Road drainage system. A backflow prevention device (check valve or flapgate) was installed in the Shermer Road outlet to the Illinois Road storm sewer to prevent flood flows generated by major storm events from backing into the Shermer Road system from the Illinois Road outlet.

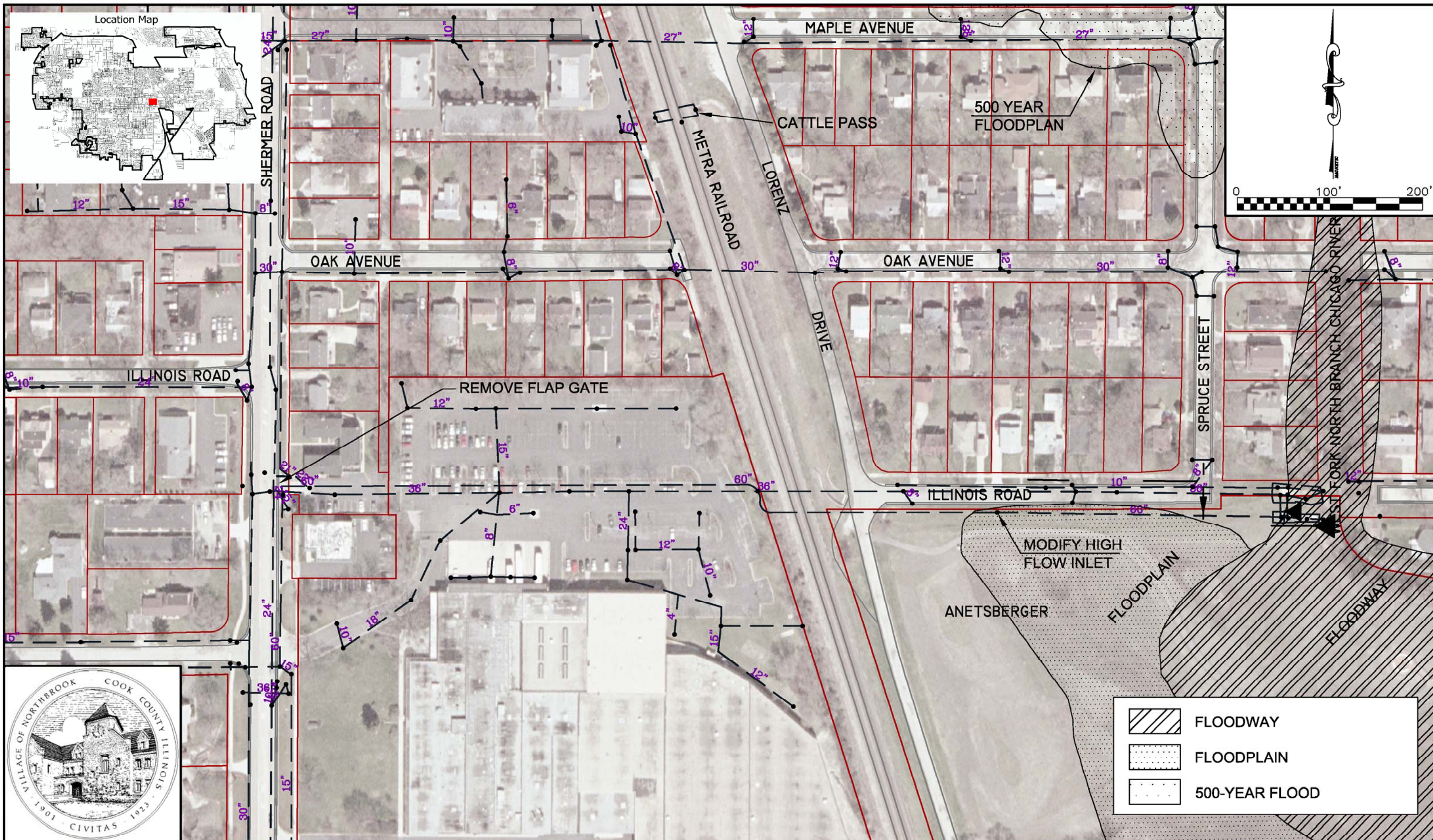
Problem Identification:

Street, property and structure flooding, predominantly on the west (upstream) side of Shermer Road

Recommended Plan:

- Improve storm sewer conveyance to the Illinois Road outlet for the more frequent, less intense storm events by removing the existing flapgate, recognizing that removal of flow restriction will be beneficial for the majority of storm events
- Consider Northbrook Manor project in conjunction with this project
- Improve inlet capacity to Illinois Road storm sewer.

Estimated Total Cost	Construction Cost	Property Cost	Engineering Cost	B/C Ratio	Optimum Protection
\$13,000	\$11,000	N/A	\$2,000	0.85	10-yr



SHERMER ROAD OUTLET

PROJECT 14