

Project 21

Williamsburg Drive/Old Post Road



Williamsburg Drive / Old Post Intersection



Old Post Road

PROJECT 21
WILLIAMSBURG DRIVE/OLD POST ROAD

Statement of Conditions:

The existing drainage system is over 40 years old (Williamsburg Square Subdivision, recorded March 1968) and runoff has increased due to property redevelopment. The system cannot adequately convey storms of moderate to high intensities. Flood flow relief is limited by the capacity of the downstream drainage system and floodwater elevation in the Revere Basin.

Problem Identification:

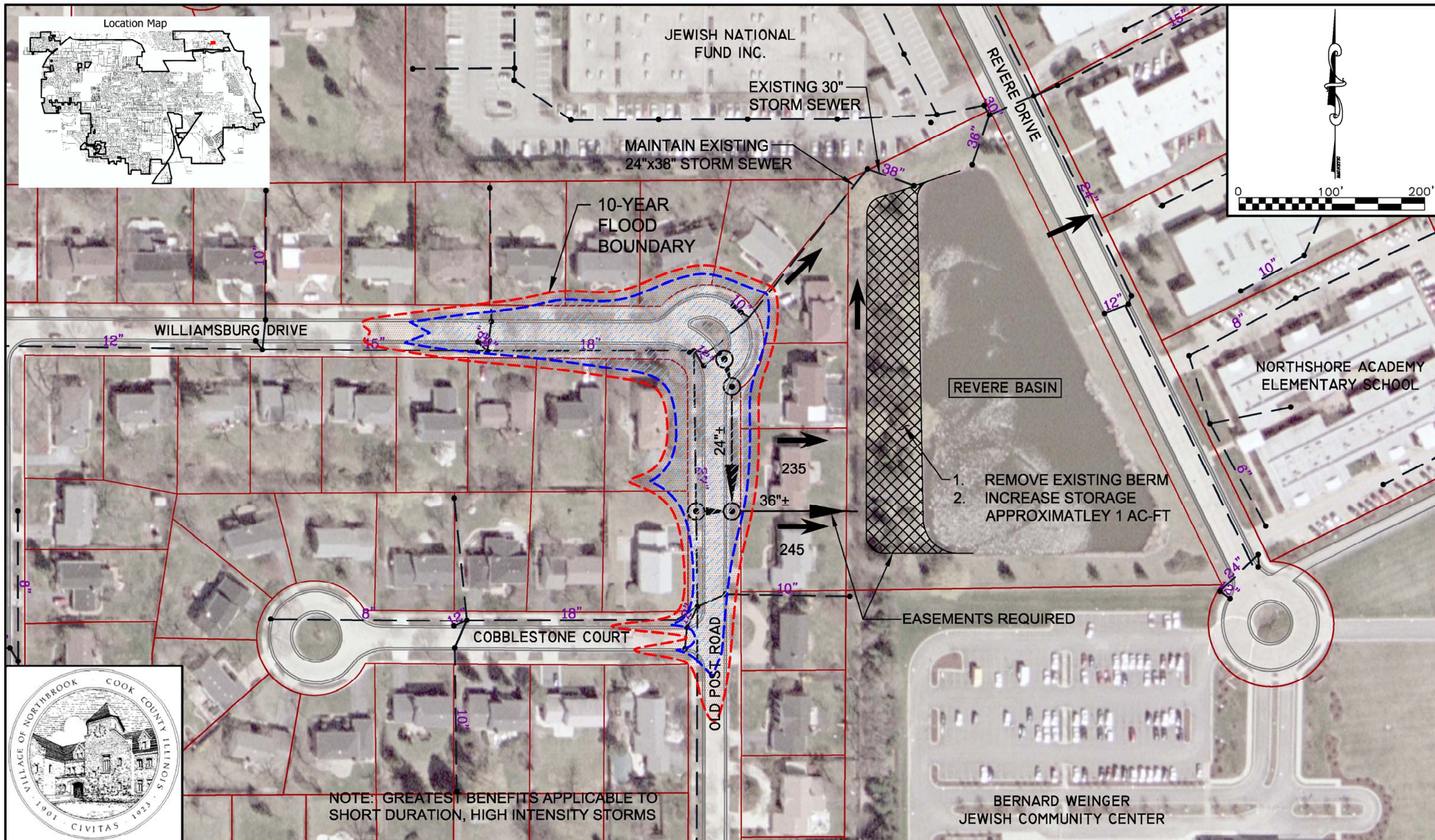
Street, front yard and structure flooding

Recommendations Plan:

- Acquire easement(s) between Old Post Road and Revere Basin
- Improve outlet by constructing flood overflow relief storm sewer from Old Post Road to Revere Basin on new drainage easements
- Improve conveyance by constructing a new storm sewer from Williamsburg/Old Post cul-de-sac to proposed relief sewer
- Mitigate increased conveyance impacts by increasing detention volume in the Revere Basin by approximately 1± acre-foot
- Improve cul-de-sac drainage collection system by providing new inlets

Estimated Total Cost	Construction Cost	Property Cost	Engineering Cost	B/C Ratio	Optimum Protection
\$270,000	\$217,000	\$5,000	\$33,000	0.16	10-yr [*]

Note: Downstream outlet needs to be evaluated to ensure optimum protection.



WILLIAMSBURG DRIVE / OLD POST ROAD

PROJECT 21